



939516 Motoc.LG SCROLL SQ049YAA- 4 HP-10370fr



MODEL : SR049YAA

**(Preliminary)**

Notice !  
Specifications are subject to change without notice.  
If you want to confirm this spec ,  
please request the decided approval sheet again.

# 1. Specification

## 1.1 Compressor

1	Compressor Model Name	SR049YAA
2	Compressor Type	Hermetic Motor Compressor
3	Compression Type	Scroll Type
4	Displacement	69.2 cm <sup>3</sup> / rev
5	Refrigerant	R22
6	Safety Approval	CCC
7	Oil / Oil Charging Amount	4GSI or NM56 / 1,800 cc
8	Nitrogen Gas Holding Pressure	0.4 ± 0.2 kg/cm <sup>2</sup> G
9	Paint	Black Color Paint
10	Net Weight (Including Oil, reference)	33 kg
11	Suction Tube I.D	∅ 22.4 ± 0.1 mm
12	Discharge Tube I.D	∅ 12.8 ± 0.1 mm

## 1.2 Motor

Motor Type / Starting Type	Three Phase Induction Motor	
Pole / Rated Output	2 Pole / 3400 watts	
Power Source	3 Ph - 380/420volt - 50 Hz	
Rated Revolution	2900 rpm	
Insulation Class	B Class	
Winding Resistance ( at 25 °C )	U - V	3.15 ± 7% ohm
	V - W	3.08 ± 7% ohm
	W - U	3.19 ± 7% ohm

## 1.3 Safety Device

Pressure Relief Valve (Pressure Diff.)	Operation Range	Internal type
	29.0~34.0kgf/cm <sup>2</sup> G	



### 1.4 Performance

		at 380 volt	at 420 volt
Cooling Capacity ( ± 5%)	[ BTU/h]	41,500	41,500
	[ kcal/h]	10,459	10,459
Power Input ( ± 5%)	[ watts]	3,807	3,807
EER ( ± 5%)	[ BTU/wh]	10.9	10.9
Running Current	[A]	6.0	6.0
Sound Level	[ dB(A)]	76 max	
Vibration	[micron]	50 max.	
Locked Rotor Ampere	[A]	45	54

※) Performance Data measured after 24hours run-in

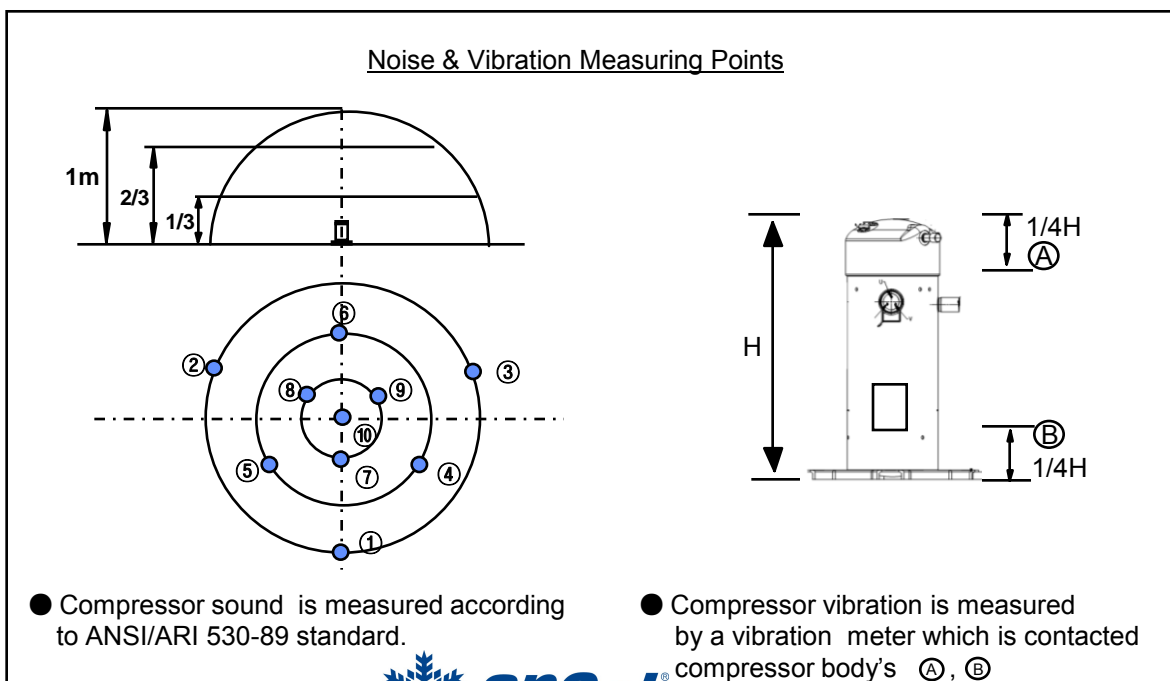
Starting Condition	Specification	Balance Pressure Condition
at Normal Condition	start at 90% of Rated Voltage(V2) ( 342 Volt )	Ps / Pd = 10.0 / 10.0 kg/cm <sup>2</sup> G
at Overload Condition	start at 95% of Rated Voltage(V2) (361 Volt )	Ps / Pd = 11.0 / 11.0 kg/cm <sup>2</sup> G

※) Others Rating Conditions

Return Gas Temp. : 18.3 °C ( 65 °F )

Liquid Temp. : 46.1 °C ( 115 °F )

Ambient Temp. : 35.0 °C ( 95 °F )



## 1.5 Others

Leak Tight Pressure		28 kg/cm <sup>2</sup> G
Hydrostatic Strength Pressure	High Pressure Side	130 kg/cm <sup>2</sup> G
	Lower Pressure Side	65 kg/cm <sup>2</sup> G
Insulation Resistance (with 500V D.C Mega Tester)		50 MΩ Min.
Withstand Voltage		2,200 V- 1 sec. Leakage Current is less than 5 mA.
Residual Moisture / Residual Impurities		200 mg Max. / 80 mg Max.

## 1.6 Electrical Component

**-Not Fixed**

## 2.Delivered Parts List

**-Not Fixed**

**Catálogo Completo**

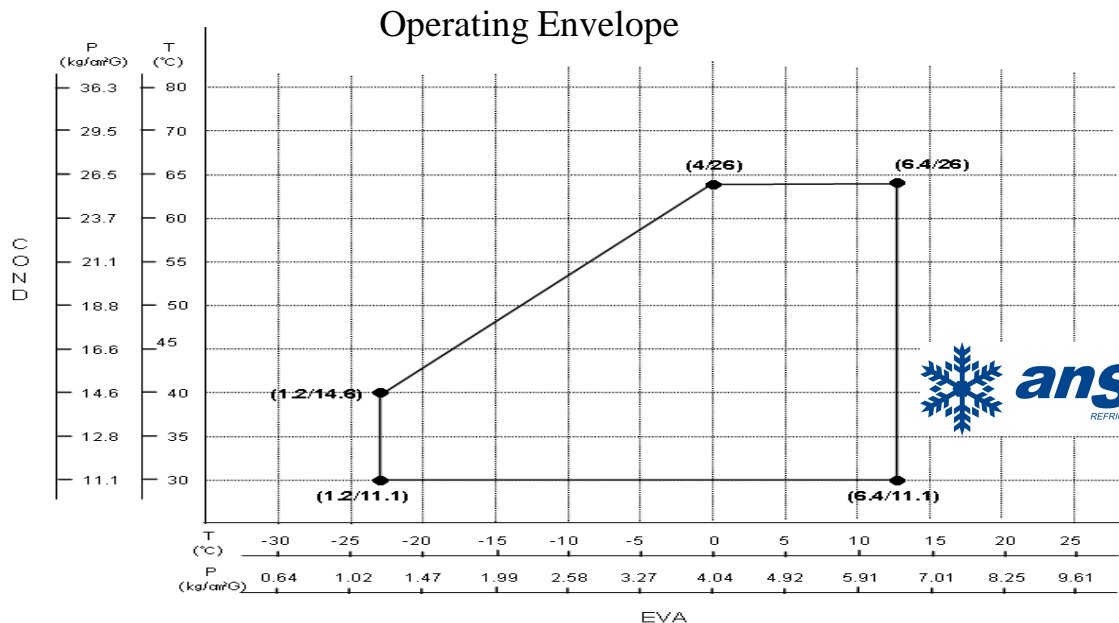
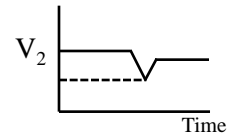


### 3. Operating Limit

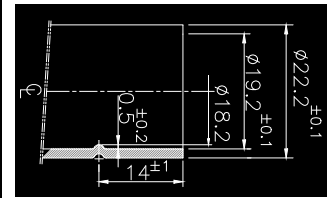
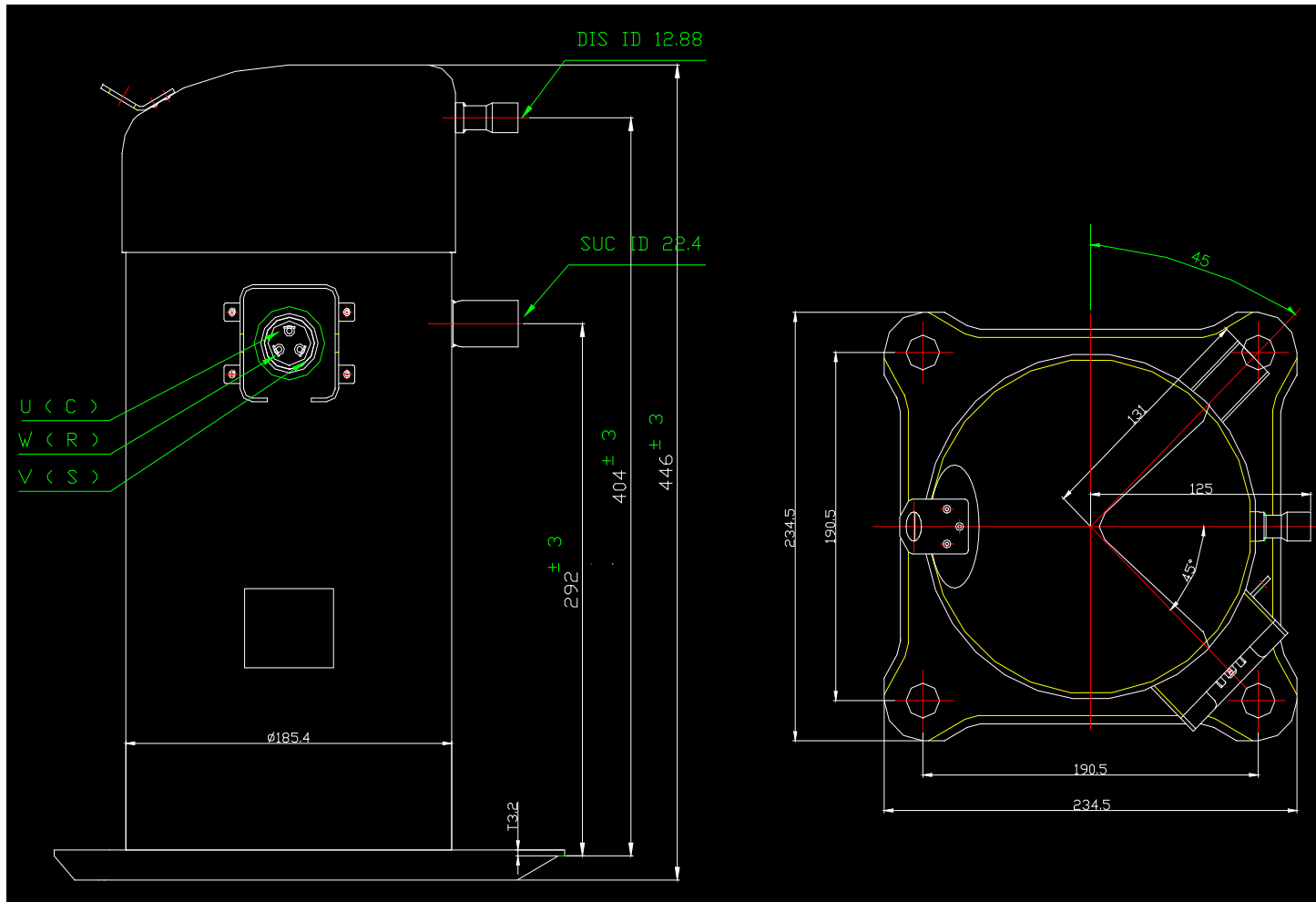
Discharge Pressure	[ kg / cm <sup>2</sup> G ]	11 ~ 26
Suction Pressure	[ kg / cm <sup>2</sup> G ]	3.0 ~ 6.4
Motor Coil Temp.	[ °C ]	135 Max.
Discharge Temp.	[ °C ]	130 Max.

Refrigerant Charge Limit	5,400g Max.
Continuous Flood Back	Continuous Flood Back before the compressor should not be more than 10% of the total circulation quantity of refrigerant.
On/Off Interval & Cycles	On / Off = 3 Minutes / 3 Minutes 20,000 Cycles or less
Voltage Range	Rated Voltage (V <sub>2</sub> ) <sup>1)</sup> ± 10 %
Frequency Range	Rated Frequency ± 2 %
Compression Ratio in Operating	The Compression ratio in operating shall be 6.7 or less , except 3 minutes starting period.
Pressure Difference at Starting	When starting, discharge pressure is balanced with suction pressure.
Inclination in Operation	The allowable tilt of the compressor in operation shall be 3 ° or less
Earth Connection	Use compressor with grounded system only.

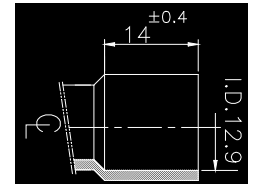
<sup>1)</sup>V<sub>2</sub> means minimum voltage measured between pins of hermetic terminal at the compressor starts.



7 / 7



Detail Suction Tube



Detail Discharge Tube

NOTES

1. PAINTING : BLACK PAINT ( ELECTRO DEPOSITION )
2. OIL : SUNISO 4GSI OR EQUIVALENT 1800 cc CHARGED
3. NITROGEN CHARGED AFTER DEHYDRATION

COMP. OUT LINE

UNIT	mm	SCALE	N / S
------	----	-------	-------

