

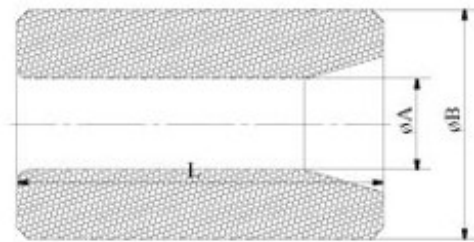


Blue Star

NÚCLEO Y NÚCLEO CERÁMICO FILTRANTE

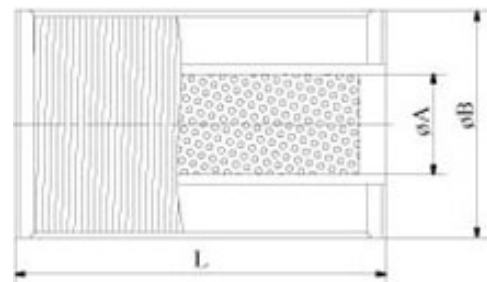
Product Introduction

All the Cores and take apart filter-drier shells produced in HANGFENG is replaceable, and can compatible with "EMERSON" products. Cores are individually packed in metal cans, fully sealed, and fully against moisture and dirt, which includes the XFL suction line cores series and the XF(H) liquid line series. The method of mounting the cores or felt elements on the end plate by means of tie rods makes them very easy to install. Detailed instructions are printed on each can.



Features

- ◆ High moisture dissolution and acid removal capacity in special environment
- ◆ Protecting the normal system and clean up the compressor



TYPE	Moisture Removing Capacity (Drop)										Dimensions		
	24°C					52°C							
	R-22	R134a	R407C	R404A/R507	R502	R-22	R134a	R407C	R404A/R507	R502	L	A	B
XF-48	362	413	225	457	388	250	340	95	340	220	5.50	1.78	3.72
XFH-48	595	670	440	720	645	435	536	285	535	475	5.50	1.78	3.72
XFL-100	962	1110	725	1195	1106	672	835	415	835	758	6.50	2.06	4.81
LX-48	-	-	-	-	-	-	-	-	-	-	5.50	2.16	3.75
LX-100	-	-	-	-	-	-	-	-	-	-	6.50	2.50	4.81

